

HÄFELE



# HÄFELE AL FRESCO

Exterior Folding Door Hardware System



**Häfele Al Fresco allows you to open up your home effortlessly, instantly expanding your dining and entertaining areas.**

Whether you are located inland or by the sea, Häfele Al Fresco will offer complete weather protection and is totally corrosion resistant. Stainless steel hinges, 316 marine grade cast stainless steel and stainless steel precision bearings are standard features of Häfele Al Fresco. The Pivot blocks, hanger bodies and bottom guides are all cast from 316 stainless steel for maximum strength and corrosion resistance. Häfele Al Fresco is the ideal system for opening up the dining and entertaining areas in homes, restaurants, hotels and resorts.

### **Stainless Steel Hinges**

Manufactured from 3mm thick stainless steel, Häfele Al Fresco mortice and non-mortice hinges are available in three finishes: brushed satin stainless steel, polished stainless steel and titanium gold. Titanium gold looks like brass but offers a substantial improvement in corrosion resistance for an easy care finish that will remain tarnish free for years.



## Häfele Al Fresco Features:

- Maximum leaf weight capacity - 75kg.
- Full corrosion resistant construction.
- Concealed channel to enhance appearance.
- Stainless steel mortice and non-mortice hinges.
- Choice of 3 finishes: satin stainless steel, polished stainless steel, titanium gold stainless steel hinges. (tarnish free for years)
- Precision bearings top and bottom to reduce rolling resistance.
- 316 cast stainless steel for improved strength and maximum corrosion resistance.
- Häfele proven quality and reliability.

## Capacity

Häfele Al Fresco is available in two weight options, 45kg for general residential and 75 kg for larger or double-glazed applications.

## 5 Wheel Precision Hanger

The wheels are grooved to run on convex rails within the track: this is the optimum design for hangers subjected to side loads. Resistance to movement is further reduced on Al Fresco 75 by the introduction of 5 high speed precision bearings, 4 taking the vertical forces with the fifth opposing the side load.



## Concealed Channel

Häfele Al Fresco bottom channel is concealed underneath the door leaves, for greater aesthetic appeal, and making it less prone to filling with rainwater.

Polypropylene outperforms traditional materials such as brass and aluminium for durability, low noise emission and corrosion, making it the first choice for the Häfele Al Fresco bottom guide channel. Aluminium and brass channels are also available if desired.

To withstand the weight of heavy doors the guide system includes 2 double sealed precision stainless steel bearings securely riveted onto the 316 marine grade cast stainless steel body.



# HÄFELE AL FRESCO

## Door Configuration

### Exterior Folding Door Hardware System

When installed according to the installation instructions Häfele Al Fresco hardware complies with Australian standard AS2047. Independent NATA approved laboratory test results were as follows:

**Water penetration:**  
450 Pascal - equivalent to driving rain at 98km/hr

**AS2047 RATING:**  
**1500 Structural** Pa N4,C2  
**Water Penetration 450**

**Air infiltration - Positive:**  
0.04 litre/sec m<sup>2</sup> - suitable for air-conditioned applications

**Air infiltration - Negative:**  
0.08 litre/sec m<sup>2</sup> - suitable for air-conditioned applications

**Ultimate strength - Positive:**  
2500 Pascal - pressure developed by class C2 cyclone winds at 232 km/hr

**Ultimate strength - Negative:**  
2500 Pascal - pressure developed by class C2 cyclone winds at 232km/hr

The test model was manufactured and certified using Western Red Cedar. It is possible to substitute the timber for hardwood without invalidating the Test Certificate.

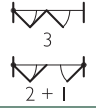
Claiming approval to AS2047 by window and door manufacturers is permissible without further testing on the condition that the Häfele Al Fresco folding door system specification is adhered to. Details can be supplied on request.

Häfele Al Fresco is suitable for all inland New Zealand and most coastal regions.

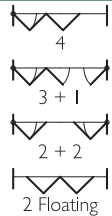
#### 2 LEAF



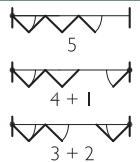
#### 3 LEAF



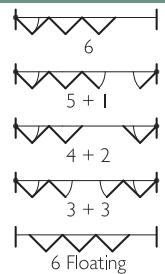
#### 4 LEAF



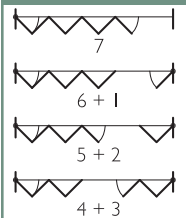
#### 5 LEAF



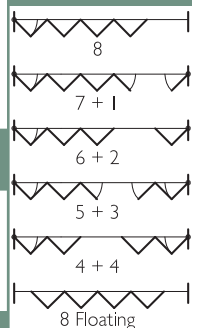
#### 6 LEAF



#### 7 LEAF

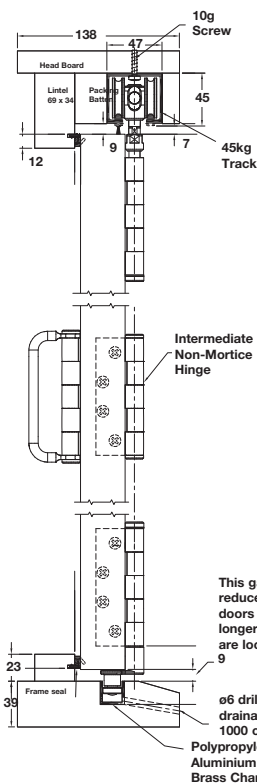


#### 8 LEAF

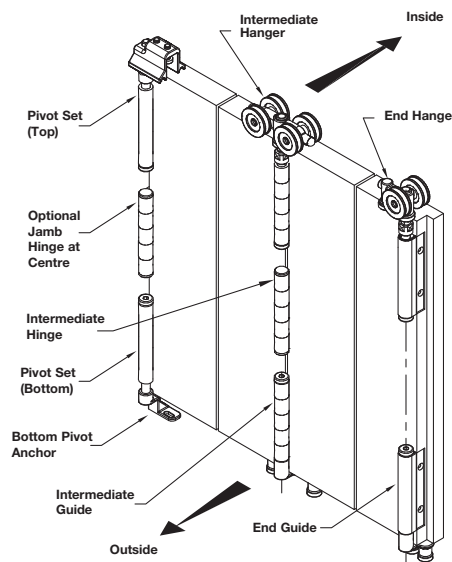
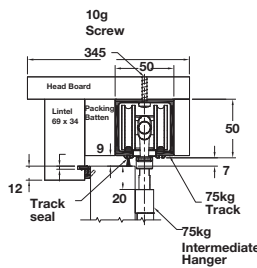


### Specifications

#### Häfele Al Fresco 45



#### Häfele Al Fresco 75



#### Specifications:

HÄFELE Al Fresco	45	75	T45	T75
Maximum leaf height	3000mm	3300mm	3000mm	3300mm
Maximum leaf weight	45kg	75kg	45kg	75kg
Maximum leaf width	900mm	900mm	900mm	900mm
Leaf thickness	35 - 50mm	35 - 50mm	35 - 50mm	35 - 50mm

Dimensional data not binding. We reserve the right to alter specifications without notice.

## HÄFELE

**Hafele NZ Ltd Head Office**  
16 Accent Drive  
East Tamaki, Auckland  
P: 09 274 2040  
F: 09 274 2041  
E: info@hafele.co.nz

**Beaumont Design Centre**  
20 Beaumont Street  
St Mary's Bay, Auckland  
P: 09 274 2530  
F: 09 274 2531  
E: architectural@hafele.co.nz

**Wellington Design Centre**  
The Wool Store  
Level 1, 262 Thorndon Quay  
P: 04 472 0294  
F: 04 472 0295  
E: wellington@hafele.co.nz

**Christchurch Design Centre**  
5 Wigram Close  
Sockburn, Christchurch  
P: 03 343 8200  
F: 03 343 8201  
E: christchurch@hafele.co.nz